

Turbidity Barrier

Typical Assembly and Installation Instructions

*This is a basic guide to installing **Granite Environmental Silt Barriers**. It is in no way comprehensive and is limited to generic information as each site is unique, along with contractor ability and equipment available for use. Please contact us to discuss designs, layout and performance requirements.*



Type 1 DOT Silt Barrier

Several sections of **Granite Environmental Turbidity Control Barriers** can be attached together to create a total length of curtain required for the application.

Attachment of turbidity barrier sections involves a three step procedure. Each section of curtain is bundled separately when shipped from the factory. The bundles are secured with vinyl straps and either placed on pallets, in boxes or directly on to a commercial truck or container. The skirt of the silt barrier is reefed or furled to the flotation with light twine. **DO NOT CUT THE TWINE REEFING LINES UNTIL THE CURTAIN IS TOWED AND ANCHORED IN THE DESIRED POSITION.**

www.Silt-Barriers.com



GraniteEnvironmental.com

Product Solutions For A Cleaner World

TEL: +1 (772) 646-0597 FAX: +1 (772) 589-3343

PO BOX 780928 | Sebastian, FL 32978-0928

Turbidity Barrier Typical Assembly and Installation Instructions

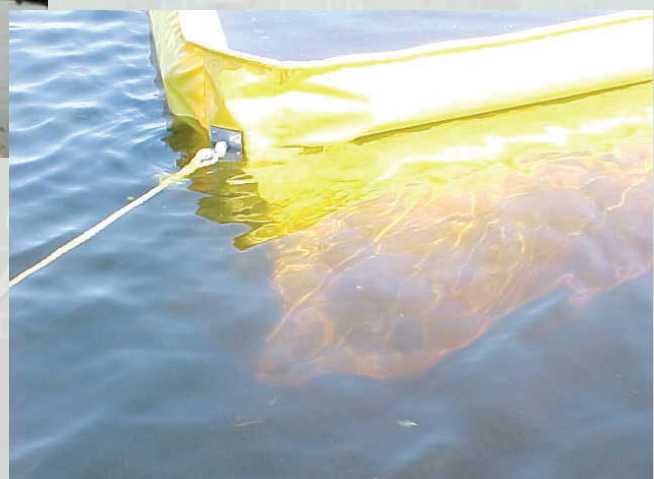
If there is adequate space along the shoreline of the work site, you may place each bundle approximately 15-20 inches apart. Cut or untie the vinyl bundle straps.

Please Note at the bottom end of medium and heavy duty barriers, the chain ballast is secured to a triangular stainless steel stress plate. On one end of the section there is a heavy duty snap hook. On the other end, there is a steel ring. It is important that the end of one section's hook will attach to the next section's ring. On light duty and economy type II barriers there are no bottom plates. Shackles perform the same function. Cut one or maybe two, of the reefing lines in order to extend the skirt for complete fastening.



River Dredging

Anchored with Fluke Anchor



www.Silt-Barriers.com



GraniteEnvironmental.com

Product Solutions For A Cleaner World

TEL: +1 (772) 646-0597 FAX: +1 (772) 589-3343

PO BOX 780928 | Sebastian, FL 32978-0928

Turbidity Barrier

Typical Assembly and Installation Instructions

After all steps of connection are complete, the skirt can be reefed again (tied with light cord) prior to towing into the water.

- STEP 1. Attach the chain via shackle or snap hook (as applicable for design utilized) for section 1 to the chain or ring of section 2.
- STEP 2. Slide together the aluminum extrusion end connectors for Type 2 and Type 3 barrier (Skip this step for Type 1 Silt Barriers). Insert the toggle pin.
- STEP 3. Using the rope ties or heavy duty zip ties (or suitable substitute), tie one grommeted eye of one section to the aligned eye of the mating section. Repeat for entire skirt depth.

The curtain should be furled/reefed up to the flotation by tying a reefing line around the flotation log. This will make it easier to maneuver when towing to position. When towing the curtain into the water, take care not to allow the curtain to become twisted. Avoid sharp objects or areas which may damage the curtain when deploying it.



**Deploying Silt Curtain
with Small Boat**

www.Silt-Barriers.com



GraniteEnvironmental.com

Product Solutions For A Cleaner World

TEL: +1 (772) 646-0597 FAX: +1 (772) 589-3343

PO BOX 780928 | Sebastian, FL 32978-0928